

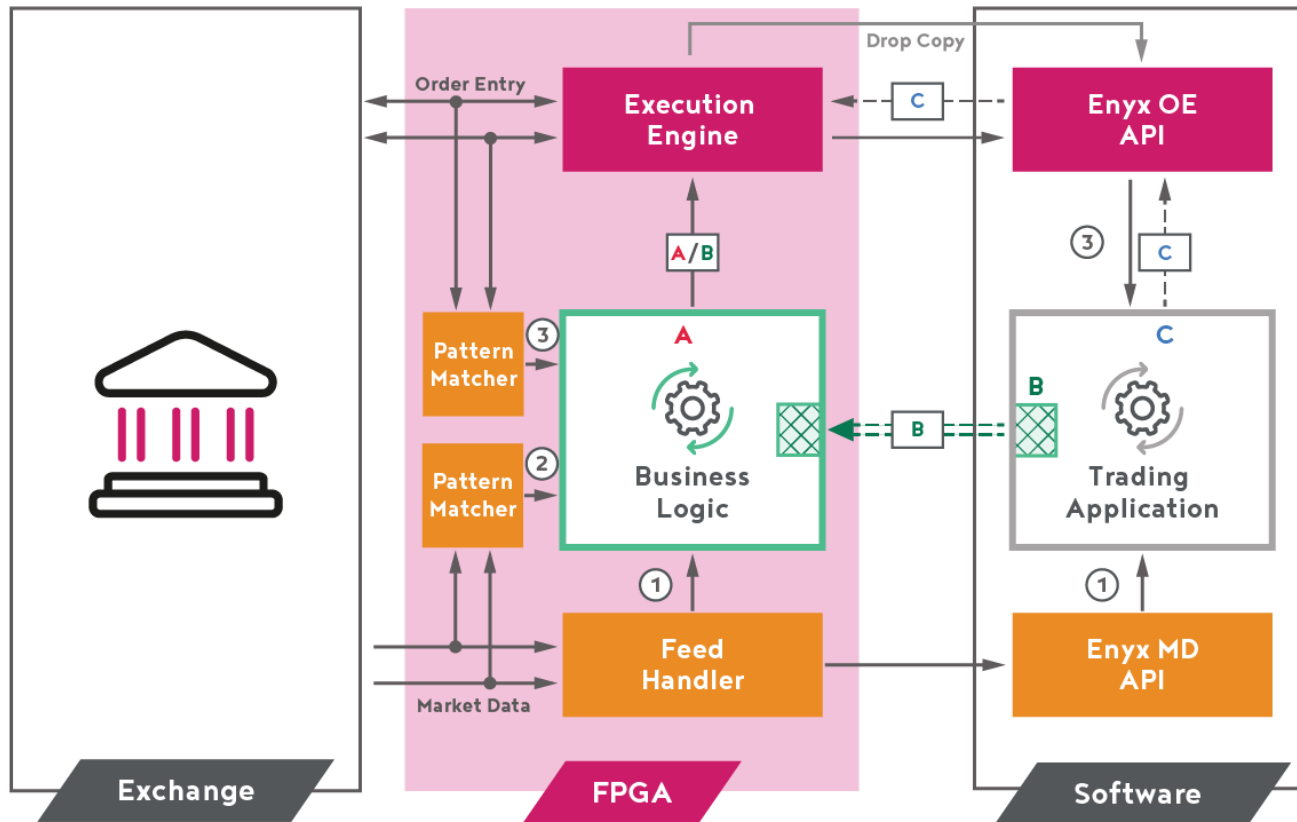


Do more with less:
How to trade using FPGA & get to market
faster without in-house expertise.

STAC – Spring 2023 - London



A versatile tick-to-trade solution



Feature complete

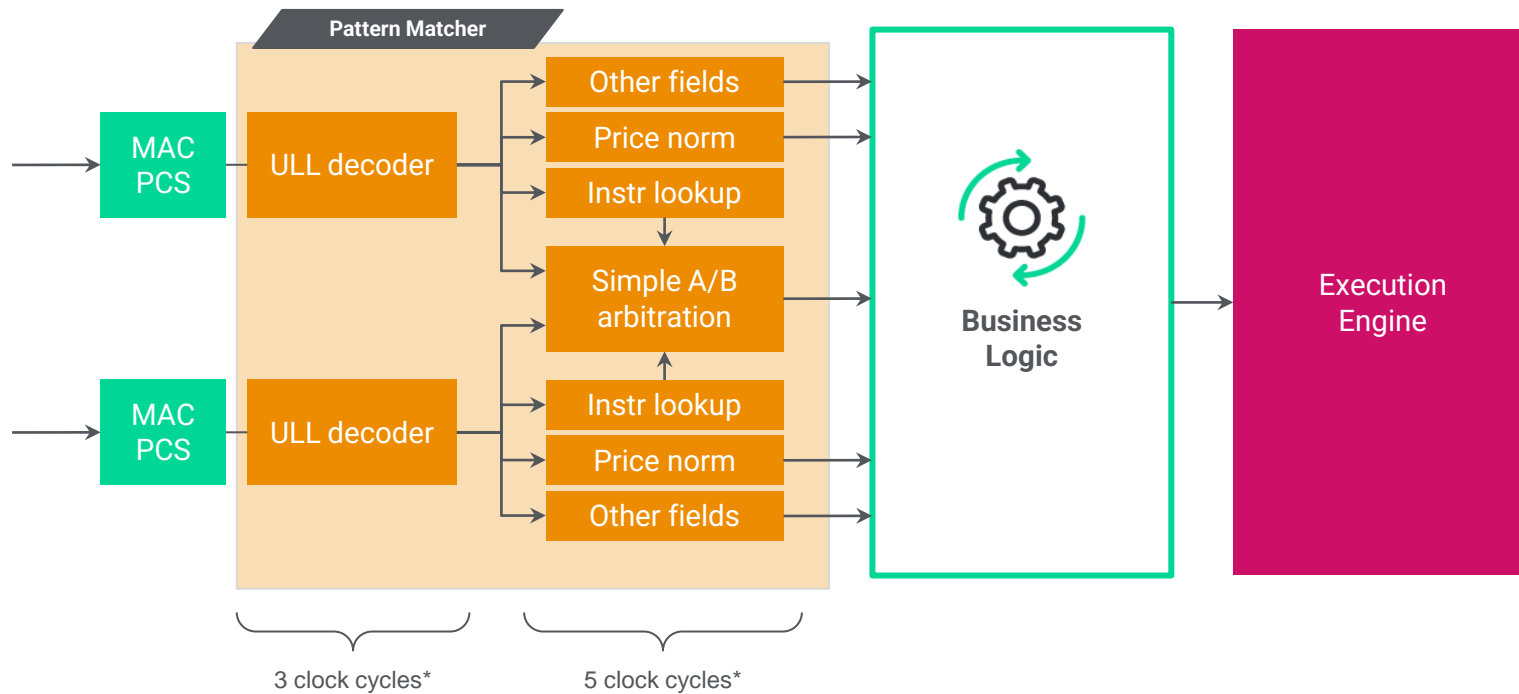
- Full FPGA book building with exchange resynchronization
- Customizable pattern matchers to extract data from raw protocols
- Full FPGA TCP management
- Embedded kill switch
- Parallel hardware & software datapaths

Use cases

- Fast cancel
- Market making
- Quantitative trading



Best performance without the pain

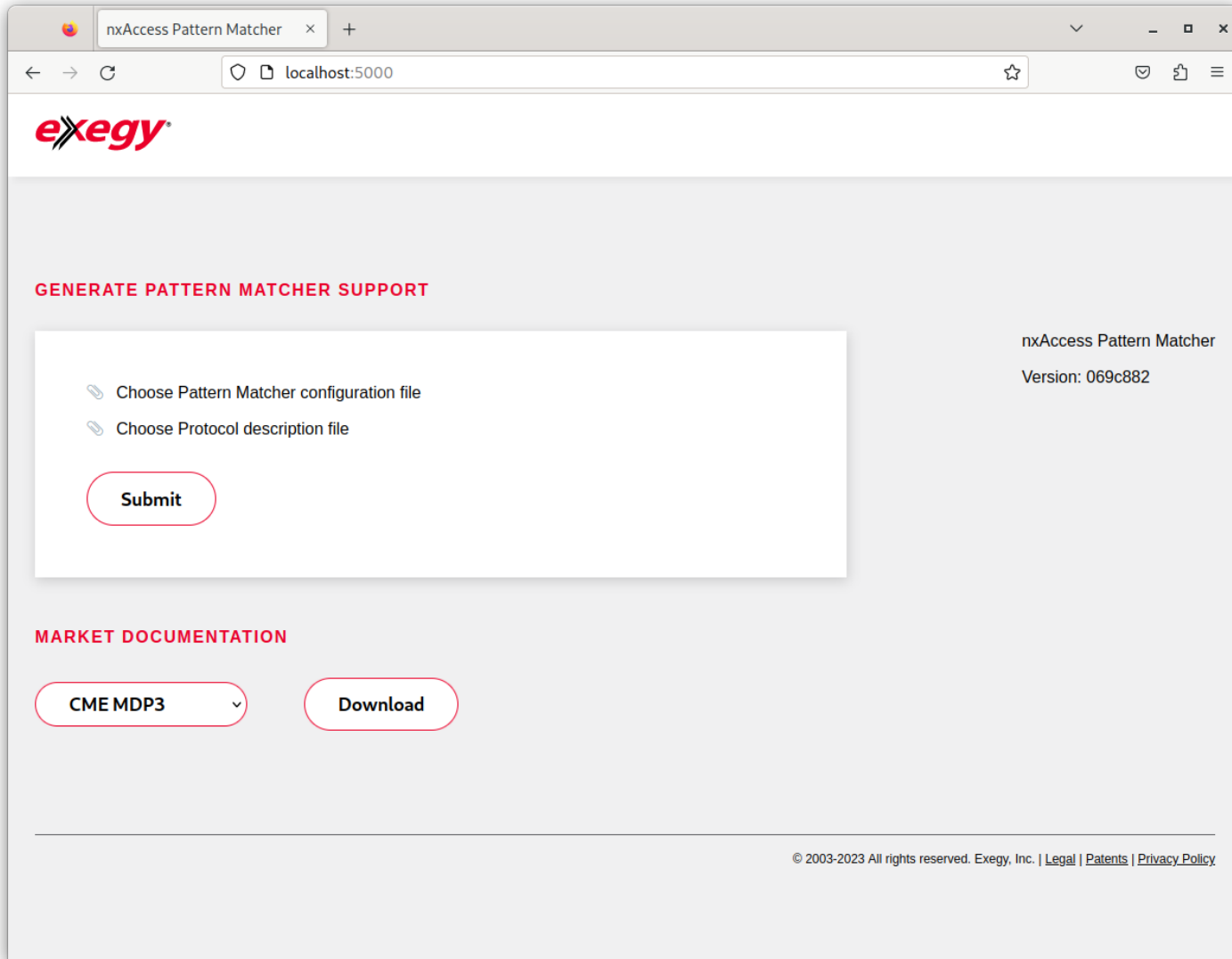


- Only process/outputs required fields/messages
- Tag/Value output
- Optional data processing:
 - Price normalization
 - Instrument lookup
 - Type conversion
 - A/B arbitration

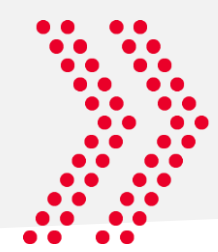
*NOT A STAC BENCHMARK



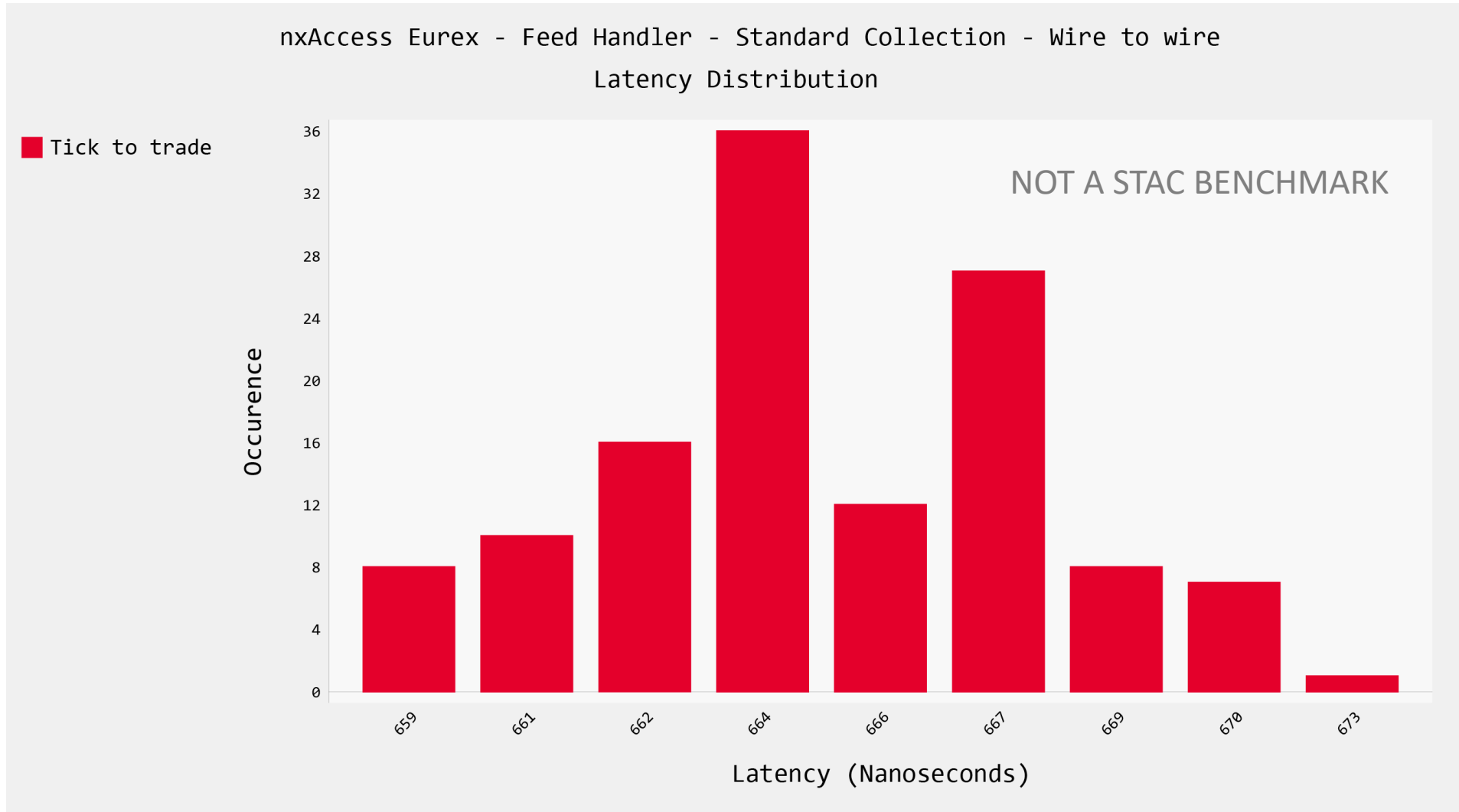
Customizable Pattern Matcher

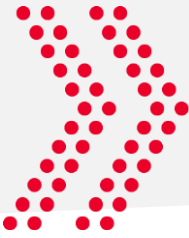


- SAAS solution to generate custom HDL code for your use case
- Upload simple configuration files to specify which fields and which messages the pattern matcher should process
- Enable/disable data processing features
- Configurable tag/value to allow for some level of normalization across venues

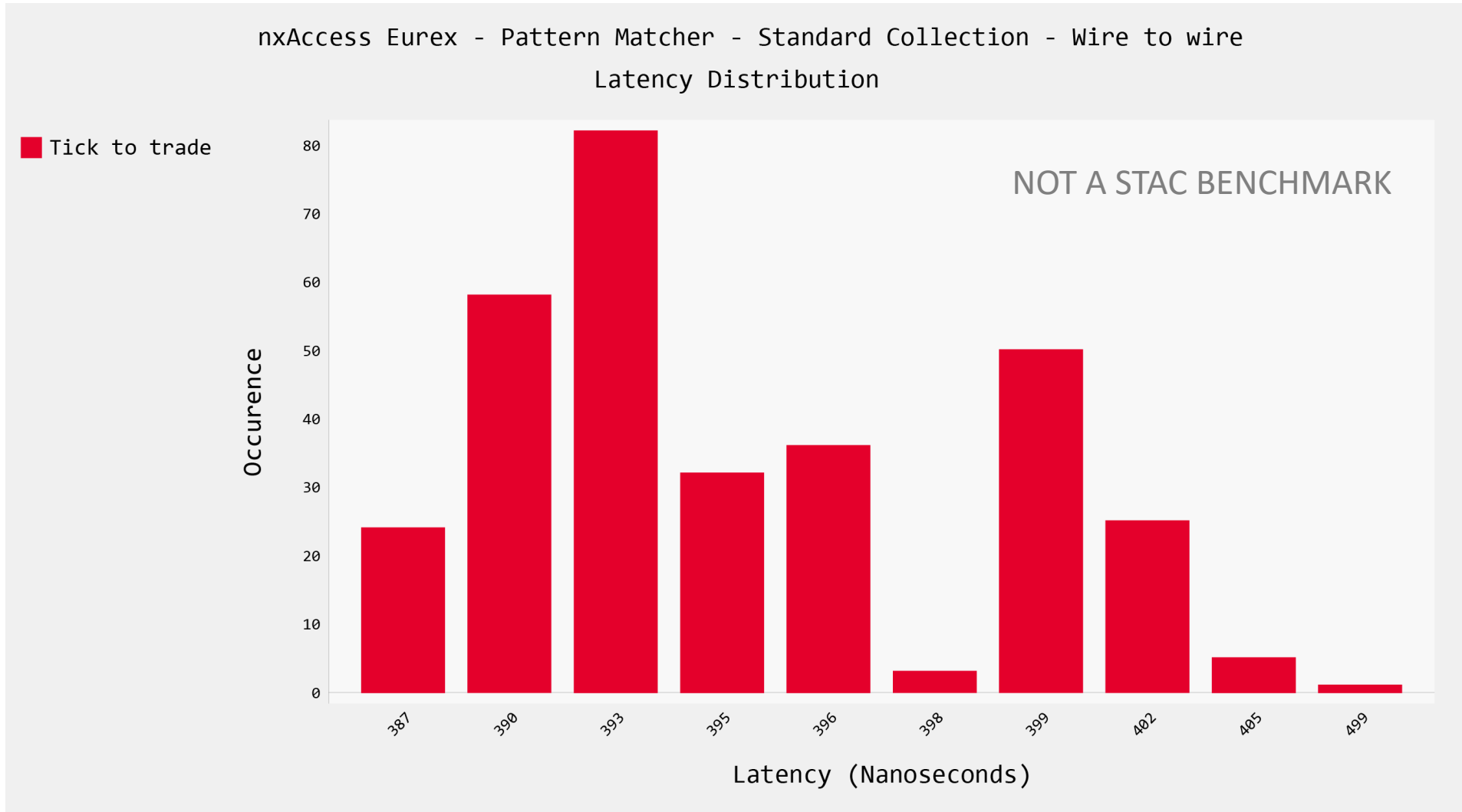


Hardware Latency – Feed Handler





Hardware Latency – Pattern Matcher





Global Coverage

Equities

Futures

Options

Fixed Income

Cboe BYX
 Cboe BZX
 Cboe EDGA
 Cboe EDGX
 Cboe BZX Options
 Cboe EDGX Options
 Cboe C1
 Cboe C2
 Cboe Futures (CFE)
 CBOT
 CME
 COMEX
 NYMEX
 All Other Channels
 BrokerTec
 NYSE
 NYSE American
 NYSE Arca
 NYSE National
 ICE Futures US
 Nasdaq Stock Market
 Nasdaq BX
 Nasdaq PSX
 Nasdaq Fixed Income
 All US Options Venues
 Montréal Exchange

Cboe Europe Equities - BXE
 Cboe Europe Equities - CXE
 Cboe Europe Equities - DXE
 Eurex
 Xetra
 Euronext
 Euronext Amsterdam
 Euronext Brussels
 Euronext Dublin
 Euronext Lisbon
 Euronext London
 Euronext Paris
 Alternext Paris
 ICE UK LIFFE
 LME
 Borsa Italiana
 EuroTLX
 FTSE
 London Stock Exchange
 Trade Echo
 Turquoise
 SIX Swiss Exchange

HKEx Securities
 HKEx Derivatives
 Osaka Exchange (OSE)
 KOSPI
 KOSDAQ
 NSE
 TAIFEX



Straightforward onboarding

- Software simulation models for market data and order entry for development and **testing without the need for a FPGA card**
- Extensive documentation and reference designs
- Reference firmware allows for full solution testing without any hardware development

Thank you

Don't forget to tick the Exegy box for more information!

